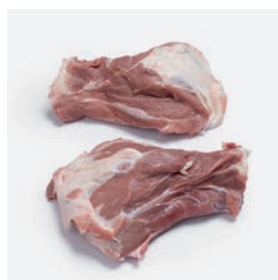


LorFood



6 WAY PORK CARCASS
六分体
CANAL 6 TROZOS



MEATY BLADE BONE
多肉扇骨
ESCÁPULA



BACK BONES
背骨
HUESOS DE ESPINAZO



FRONT HOCK
前肘
CODILLO PALETA



STERNUM BONES
胸骨
HUESOS DE ESTERNÓN



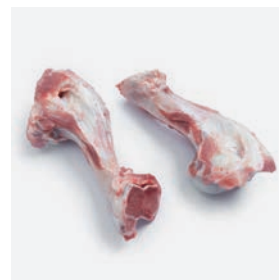
NECK BONES
颈骨
HUESOS DE CABEZA DE LOMO



TAIL BONES
尾骨
HUESO DE RABO



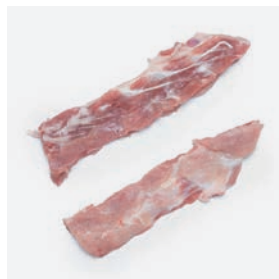
HUMERUS BONES
前筒骨(整)
HUESOS DE HÚMERO



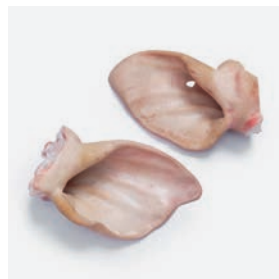
HUMERUS HALF CUT
半切前筒骨
HUESO CAÑA PALETA CORTADO



HAM HOCK SMALL
小后肘
CODILLO JAMÓN CERDO



ROSARY BONES
龙骨边
HUESO DE ROSARIO



EARS A
A级猪耳
OREJAS DE CERDO



HIND FEET A
A级猪脚
PATAS DE CERDO



FRONT FEET A
A级猪手
MANOS DE CERDO



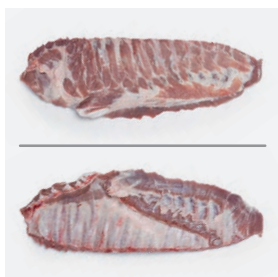
FEMUR BONES
后筒骨
HUESOS DE FEMUR



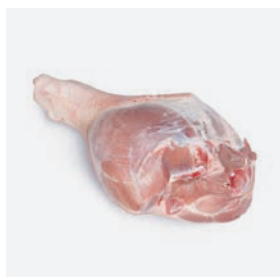
KNUCKLE BONE
脚圈
HUESO RODILLA



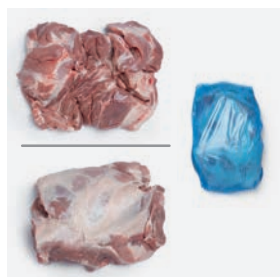
SNOUT WITHOUT LIP
猪鼻子
MORRO SIN LABIO



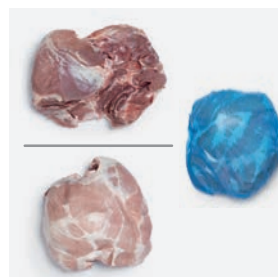
SHAVED SPARE RIBS RIBLET ON
肋排带小排
COSTILLA PELADA CON PUNTA



HAM BONE IN ROUND CUT +13 KG
圆切后腿13+
JAMÓN REDONDO SIN PATA



SHOULDER 4D
4D前腿肉
PALETA 4D



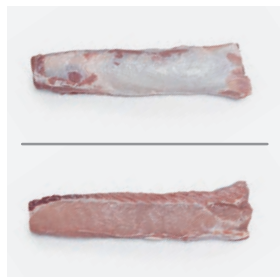
HAM 4D
4D后腿肉
JAMÓN 4D



SHEET BELLY BONELESS RINDLESS
去皮五花
PANCETA SIN COSTILLA SIN CORTEZA



SHEET BELLY BONELESS RIND ON
带皮五花
PANCETA SIN COSTILLA CON CORTEZA



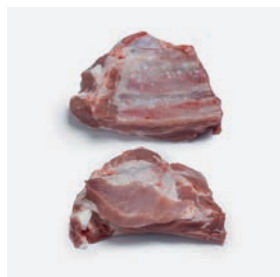
LOIN BONELESS CHAIN OFF
里脊去侧边
CINTA LOMO SIN CORDÓN



PORK LIP
冷冻猪唇
LABIO CERDO



FROZEN PORK BELLRYIND
冷冻猪腹皮
CORTEZA DE PANCETA



FROZEN PORK MEATY RIBLETS
冷冻猪多肉小排
PUNTA DE COSTILLA